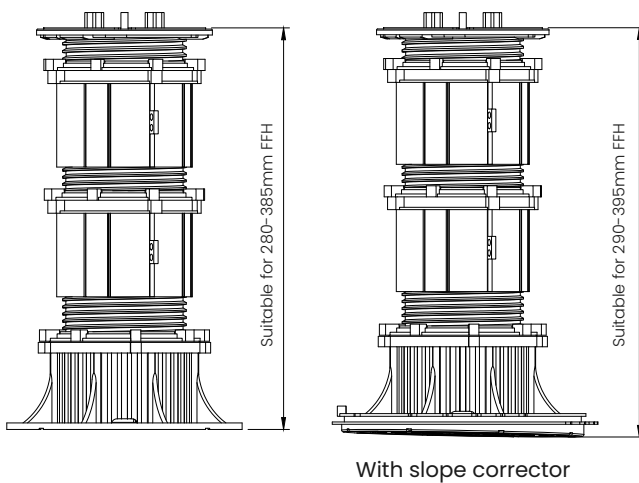
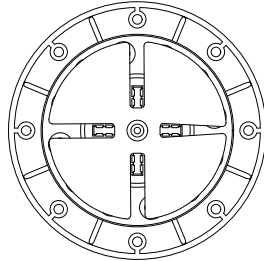


FORZA OUTDOOR PEDESTAL FFH 280 – 385 mm

COMPONENTS

- Base
- 'T'- Head
- Coller
- Coller Ring
- Extension
- Shims & Spacers for T-Head-3.00 mm



APPLICATIONS

Forza pedestals can be used for a wide range of outdoor applications, such as poolside decking, outdoor gardens, terraces, industrial flooring, fountains and swimming pool.

MATERIAL & FEATURES

- Polypropylene (PP)
- Manufactured from 5 mm thick 100% virgin polypropylene and 100% Recyclable
- Designed and manufactured in India
- UV stable & chemical resistance
- Inbuilt safety locking mechanism
- Provision of mechanical fixing if required however larger base area to avoid the screws fixing
- Temperature range -30° C to 90° C
- Slope corrector can create or compensate for up to 5% pitch
- Superior weight resistance and durable that supports 1000 kg per pedestal

CHARACTERISTICS

Base	Ø 200 Height - 66 mm
'T' Head	Ø 149 Height - 82 mm
Coller	Ø 148 Height - 70 mm
Coller Ring	Ø 74 Height - 10 mm
Extension	Ø 142 Height - 161 mm
Spacers for T-Head	Ø 83 Height - 25 mm
Shims	Ø 70 Thickness - 1.00 mm
Pedestal weight	1.282 kg. Approx
Height	Adjustable from 280 to 385 mm
Slope corrector	Ø234 Height-20 Ø220 Height-20

COMPRESSION TEST

Position	1/1
Height	280 mm - 385 mm
Breaking load	1080 kg (2380 lbf)

SAFETY INSTRUCTIONS

Forza pedestals are designed to support outdoor raised floors for pedestrian traffic only. The pedestals should not be subjected to dynamic loading, moving and/ or vibrating machinery & equipment, including maintenance, cleaning vehicles, automobiles, other similar equipments and for applications such as sports flooring.

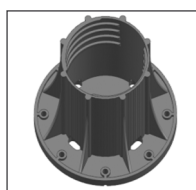
Note:

Unitile has a policy of continuous improvement and reserves the right to modify, revise or change the above specifications without notice. This specification is for descriptive purpose only and is based on the product as on the date of publication of this information.

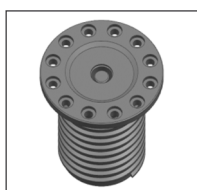
FORZA OUTDOOR PEDESTAL – COMPONENT & ACCESSORIES

Forza outdoor pedestals can be installed on a wide range of solid and stable substrates, such as concrete slabs, cement screeds, waterproof membranes, and insulation panels. Accessories available for applications with various outdoor finishes, such as granite stone pavers, composite/timber decking, ceramic tiles and fibreglass or metal grating panels.

COMPONENTS



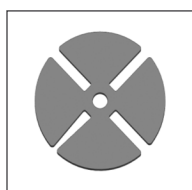
Base



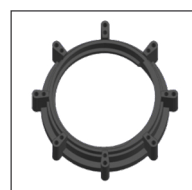
'T'- head



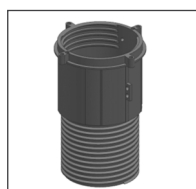
Coller



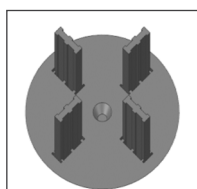
Shims



Coller ring

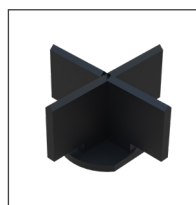


Extension

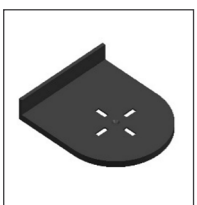


Spacers for
T-head

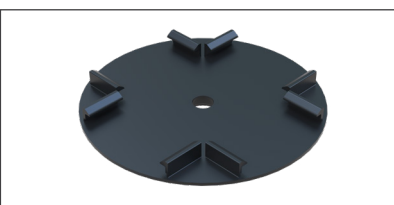
ACCESSORIES



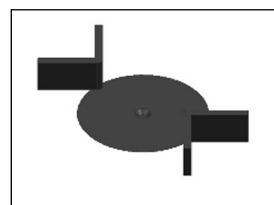
Tile spacer
3.00mm



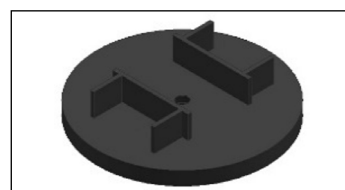
Perimeter
support



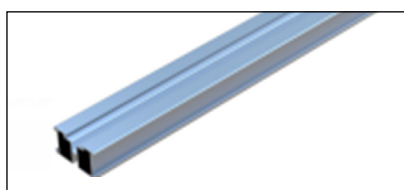
Spacer for aluminium beam



Spacer for wooden plank



Spacer for wooden plank
(Four way)



Aluminium beam
66(W) x 35(h) x 1.8(T)

Note:

Unitle has a policy of continuous improvement and reserves the right to modify, revise or change the above specifications without notice. This specification is for descriptive purpose only and is based on the product as on the date of publication of this information.